

Matter Smart Power Plug
INSTRUCTION

Thanks for Choosing our Matter Smart Home Sensors

Contents

- Specification ----- 01
- Indicator Light Status ----- 02
- Product Configuration ----- 03
- Installation ----- 04
- Compatibility and Requirements ----- 05
- Tuya APP Add Instruction ----- 06
- Home APP Add Instruction ----- 27
- Google Home Add Instruction ----- 41
- Amazon Alexa Add Instruction ----- 56
- Others ----- 71

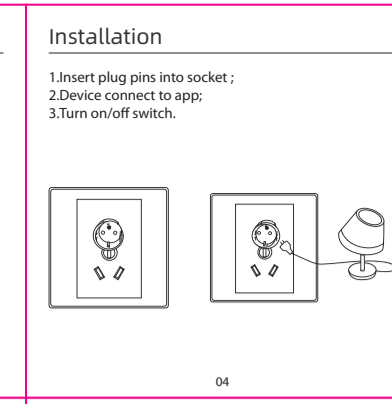
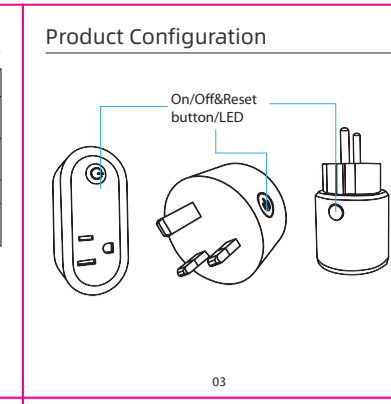
Specification

Rated Power: AC 85 ~ 250V 50/60Hz
Standby Consumption: 0.5W
Wireless Type: 2.4GHz
Wireless Standard: IEEE 802.11b/g/n
Wireless Distance: 45M
Working Temperature: 0°C ~ 60°C (32°F ~ 140°F)
Working Humidity: 0% ~ 85%RH(Non-Condensing)

	Maximum Load Capacity	Product Size
EU model	3680W	50mm x 50mm x 85mm
FR model	3680W	50mm x 50mm x 85mm
UK model	3680W	59mm x 59mm x 56mm
US model	2000W	82mm x 38mm x 50mm

Indicator Light Status

Devices Status	LED Status
Waiting Configuration Mode	Led flashes quickly(2 times/second)
Waiting Configuration Time	Within 3 minutes
Device On/Off	Led indicator on/off
Reset	Long press the on/off button for 5 seconds



Material Compatibility and Usage Requirements

APP	Gateway Devices	APP Version Requirements	Other Requirements
Tuya Smart	No required	V1.7.0 and above	
Home	HomePod, HomePod mini, Apple TV and iPad	iOS 16.0 and above	
Google Home	Speaker: Google Home, Google Home Mini, Nest Mini, Nest Audio Display: Nest Hub (1st gen), Nest Hub (2nd gen), Nest Hub Max Wi-Fi router: Nest Wi-Fi Pro (Wi-Fi 6E)	Android 8.1 and above Google Play service 23.0.17 and above Bluetooth Low power consumption 80.0.2 and above	
Amazon	Echo Dot (3rd Gen), Echo Dot (4th Gen) with clock, Echo Hub (1st Gen), Echo Show (3rd Gen), Echo Show (5th Gen), Echo Show (2021 Refresh), Echo Show 8 (2nd Gen), Echo Show 5 (2nd Gen), Echo Show 10 (2nd Gen), Echo Show 15 (2nd Gen), Echo Show 20 (2nd Gen), Echo Show 8 (1st Gen), Echo Show 5 (1st Gen), Echo Show 10 (1st Gen), Echo Show 15 (1st Gen), Echo Show 20 (1st Gen), Echo Hub (1st Gen)	2.2.151617 and above	

Tuya APP Add Instruction

Download APP

- 1.Android system: Download "Tuya Smart"APP from GooglePlay to your mobile;
- 2.IOS system: Download "Tuya Smart"APP from App Store to your mobile.

Available on the App Store | Available on Google Play

Register and login

- 1, Run the application from your smartphone.
- 2.Register and login

Add Device

The default state of the device is Waiting Configuration Mode(LED flashes 1/2). If the reset button is off, please long press the reset button for 6 seconds, then add the device.

Note: The device only supports 2.4GHz Wi-Fi type, please open the Bluetooth before adding.

1. Choose "Add Device", scan the QR code on the device;

2. Scan the QR code of the device, wait for WiFi Configuration

Function Interface APP main interface

The state of on/off/Status display

Function

1. On/Off Button

2. Power Consumption Record

3. Operation Time

4. Timing Function/Schedule

5. Countdown Function

6. Log

7. Relay Status

8. Light Mode

9. Child lock

10. Clear Electricity Usage

Delete&Reset

Share Device (1) Single Device Sharing

5. Countdown Function

6. Log

7. Relay Status

Scene Linkage

Eg: When the door sensor detects door is opened, then the plug will be turned on in their scene linkage.

Home APP Add Instruction

Attention:

- ① Please make sure the IOS system of the mobile is above 16.1;
- ② A smart home hub must be set up: HomePod, HomePod Mini, Apple TV or iPad; then the Matter devices can be added into "Home"APP;
- ③ The configured Wi-Fi must be on the local Area Network (LAN) with the hub;
- ④ Please open Bluetooth before adding firstly.

APP Download

- (1) Please open APP Store, then search "HomeKit" and download the APP.
- (2) Please open the APP and login in via local iCloud account after the download has completed.

Add device

The default state of the device is waiting configuration mode(LED flashes 1/2). Non configuration mode, please long press the reset button for 5 seconds, then add the device again.

Note: The device only supports 2.4GHz Wi-Fi type and must be added via a smart home hub.

Scan the QR code of device for adding

Add device via serial number

a. App will search the nearby device automatically, then click the icon of the device, input the serial number for adding.

Setup Code

Accessory Setup

Connecting to Accessory

Add completion

APP Interface

Function Settings

Modify device name and room location

Automation Settings

Home Settings

Delete the device

Google Home Add Instruction

Note:

- ① A "Matter enabled hub" must be set up in order to add Matter devices to the "Google Home" app;
- ② Configured WiFi network and Matter-enabled hub must be in the same local area network(LAN);
- ③ Please open the Bluetooth in the phone before adding firstly.

APP Download

1. Android system: Please download "Google Home"APP from GooglePlay;
2. IOS system: Please "Google Home"APP from AppStore.

3. Please sign in, create a home, and add Matter-enabled hub (Please refer to Google device instructions)

Add completion

APP Interface

Function Settings

Scan the QR code of device for adding

Home Settings

Add device via serial number

Connecting device to Google Home

Device connected

Add completion

APP Interface

Function Settings

Automation Settings

Delete the device

Amazon Alexa Add Instruction

NOTE:

- ① Please set up an Echo device that is compatible with Matter (Echo devices with built-in Matter support) in order to add Matter devices to "Amazon Alexa"APP;
- ② Configured WiFi network and "Echo" must be in the same local area network(LAN);
- ③ Please open the Bluetooth in the phone before adding firstly.

APP Download

1. Android system: Please download "Amazon Alexa"APP from GooglePlay;
2. IOS system: Please "Amazon Alexa"APP from AppStore.

3. Please sign in, create a home, and add "Echo" compatible with Matter. (Please refer to Amazon device instructions)

Add Device

The default state of the device is waiting configuration mode(LED flashes 1/2). Non configuration mode, please long press the reset button for 5 seconds, then add the device again.

NOTE:

The device only supports 2.4GHz Wi-Fi type and must be added via a "Echo" compatible with Matter.

Add completion

APP Interface

Function Settings

Automation Settings

Delete the device

Home Settings

Add completion

APP Interface

Function Settings

Automation Settings

Home Settings

Delete the device

Others

Simultaneous use of multiple apps that support Matter (After the device has been added via an App, then it can be added via other App channels.)

NOTE:

Please ensure the App channel and the device in the same local area network(LAN).

Tuya APP

Home APP

Google Home APP

Google Home APP

Google Home APP

Amazon Alexa APP

Amazon Alexa APP