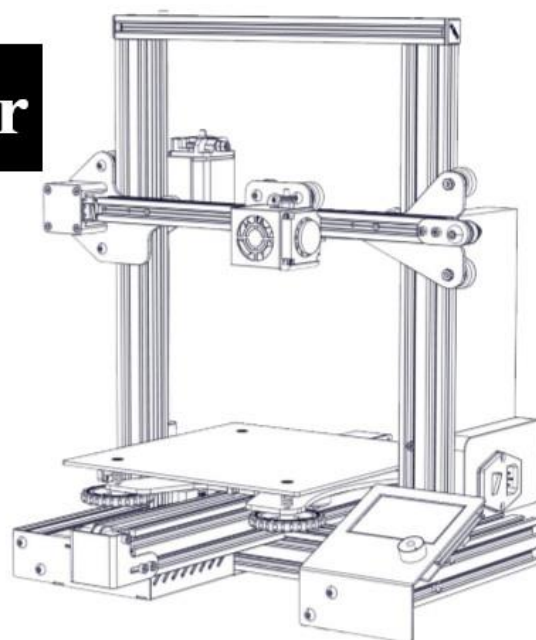


INSTRUKCJA UŻYTKOWNIKA – DRUKARKA 3D

# Ender-3 Pro 3D Printer

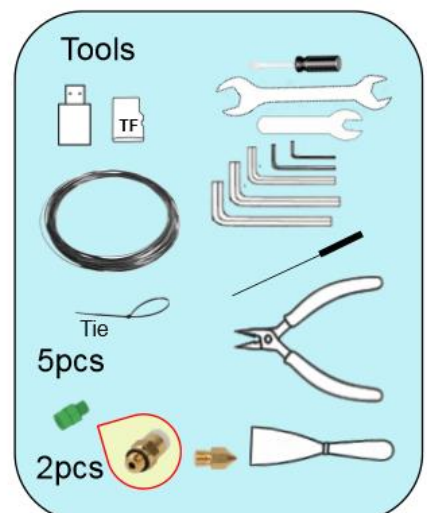
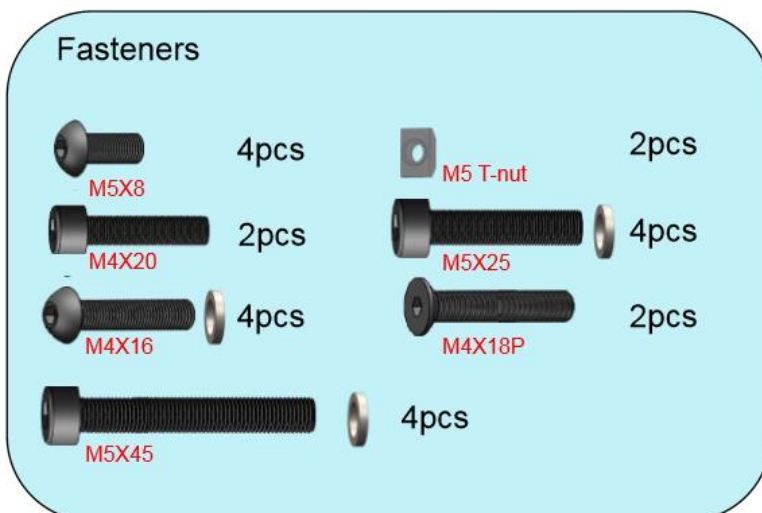
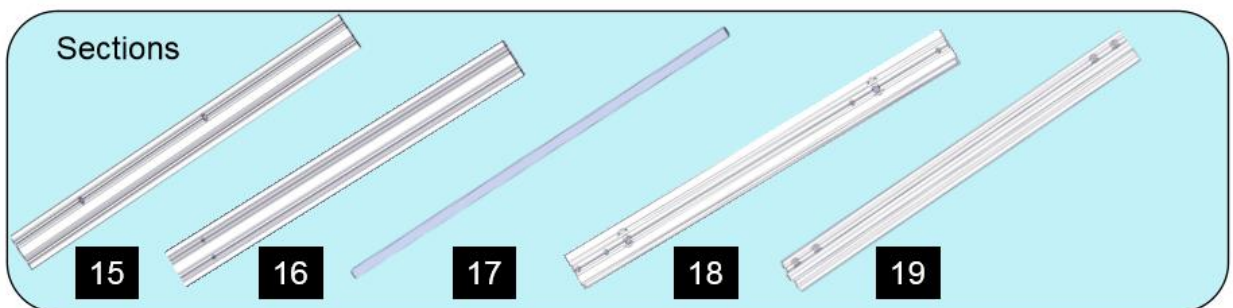
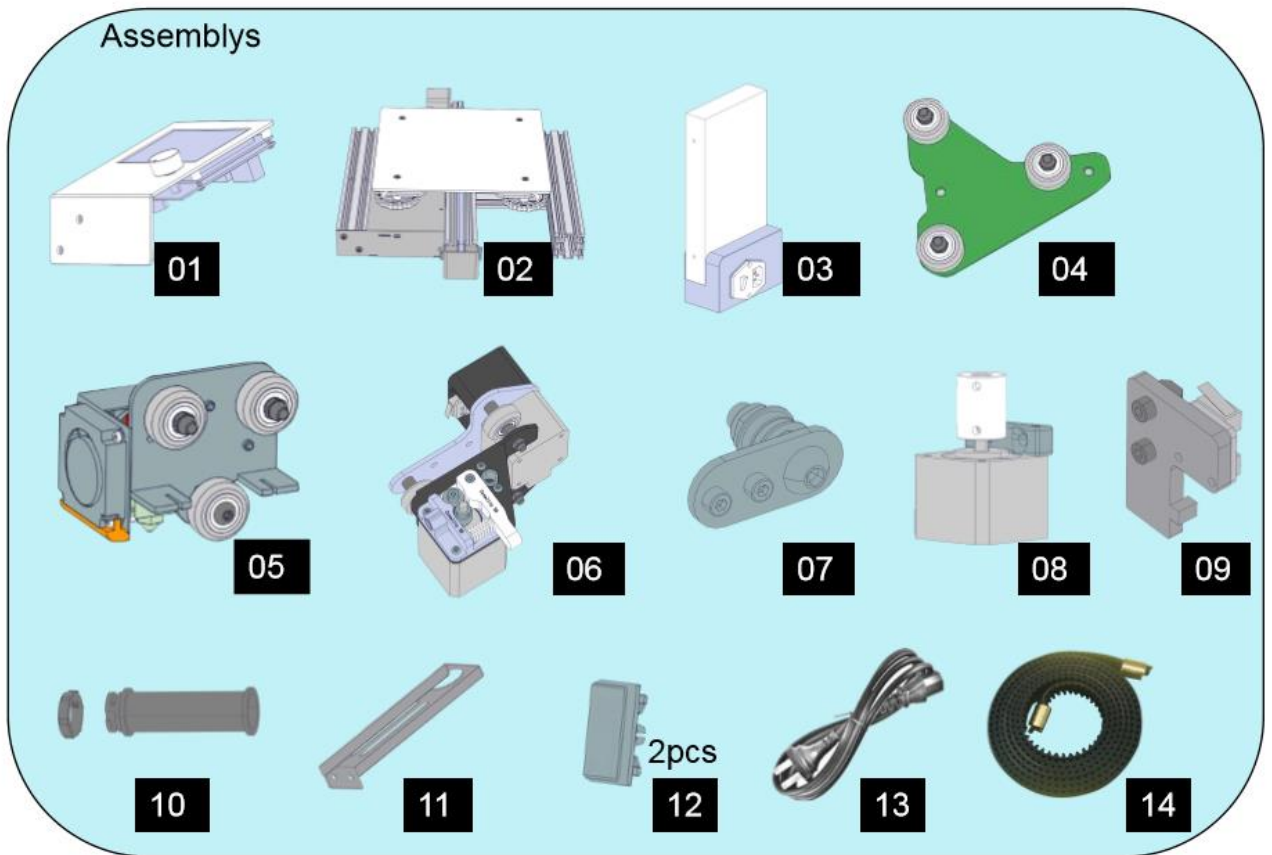
Instructions for assembly



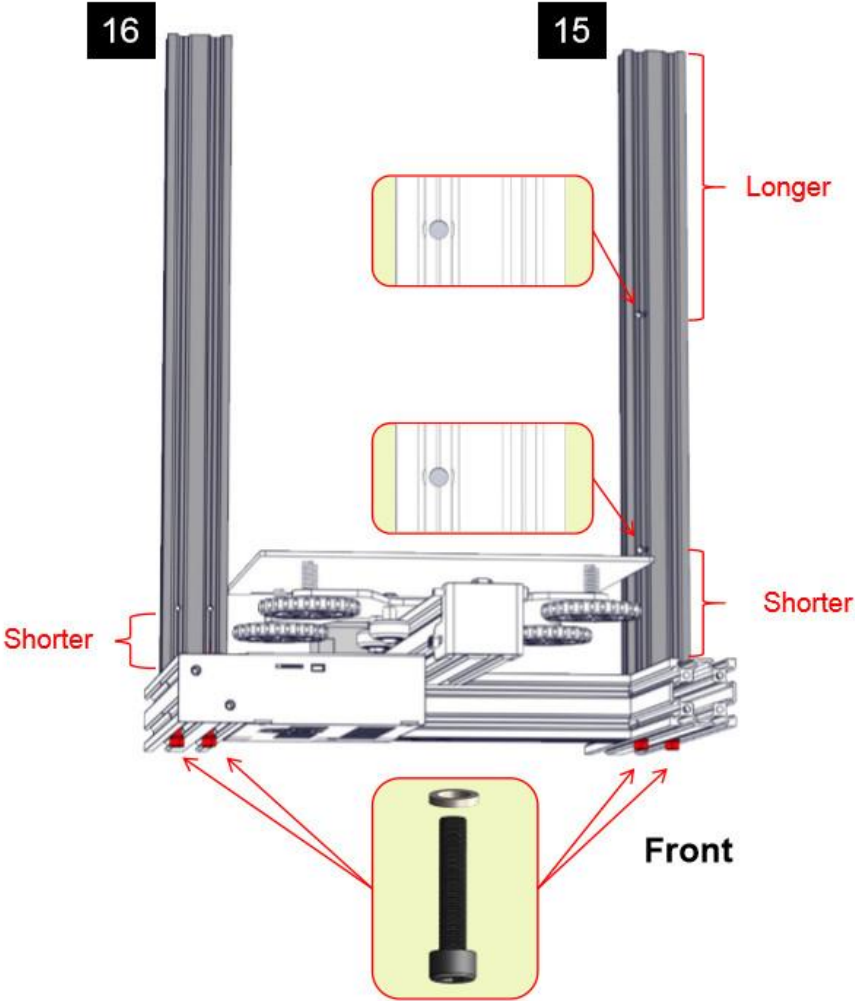
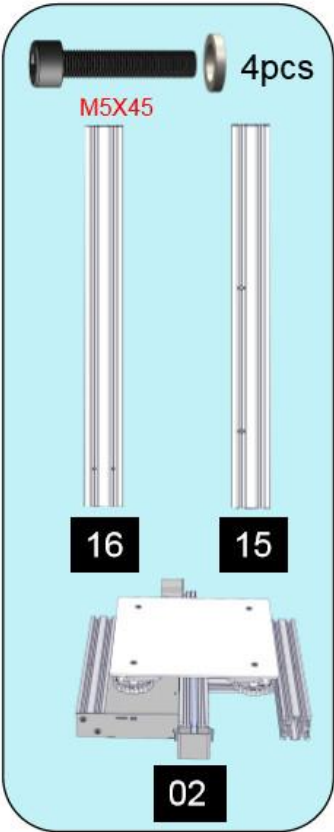
Niniejsza instrukcja użytkowania dotyczy modelu drukarki 3D:

Ender-3 Pro

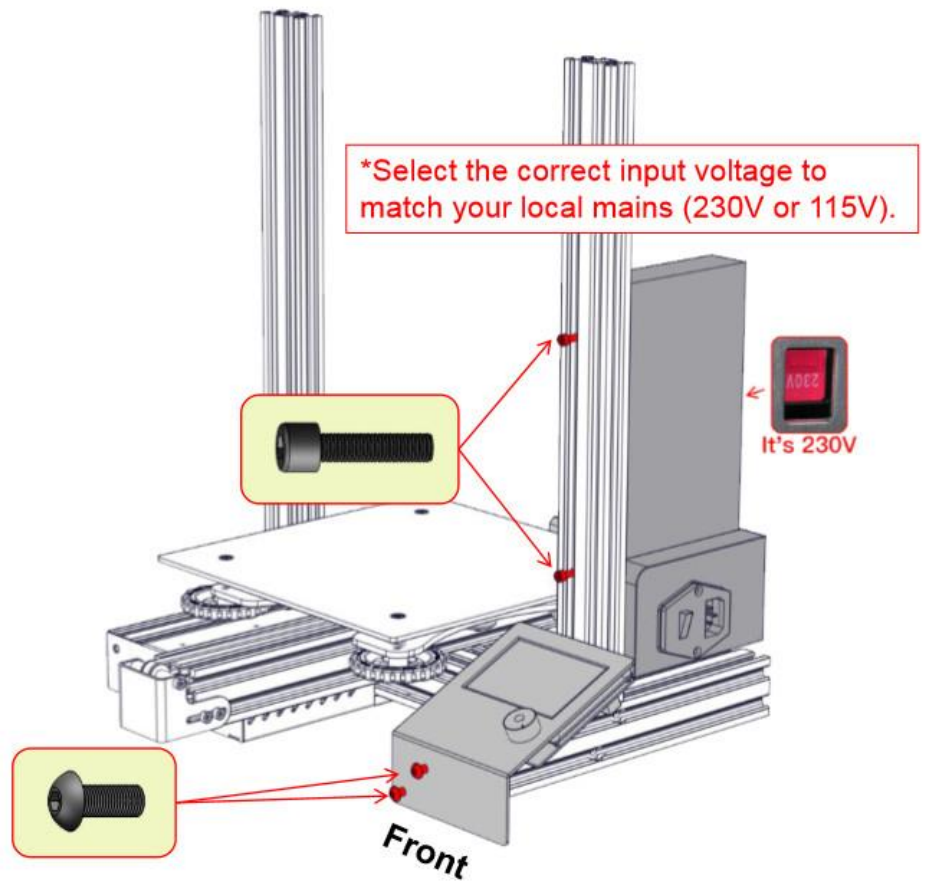
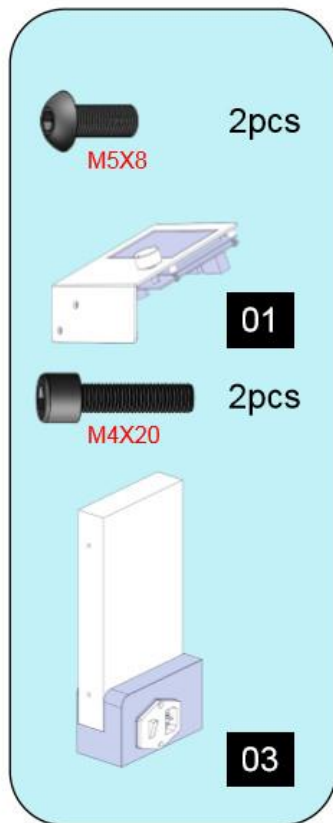
# LISTA ELEMENTÓW



**KROK 1**

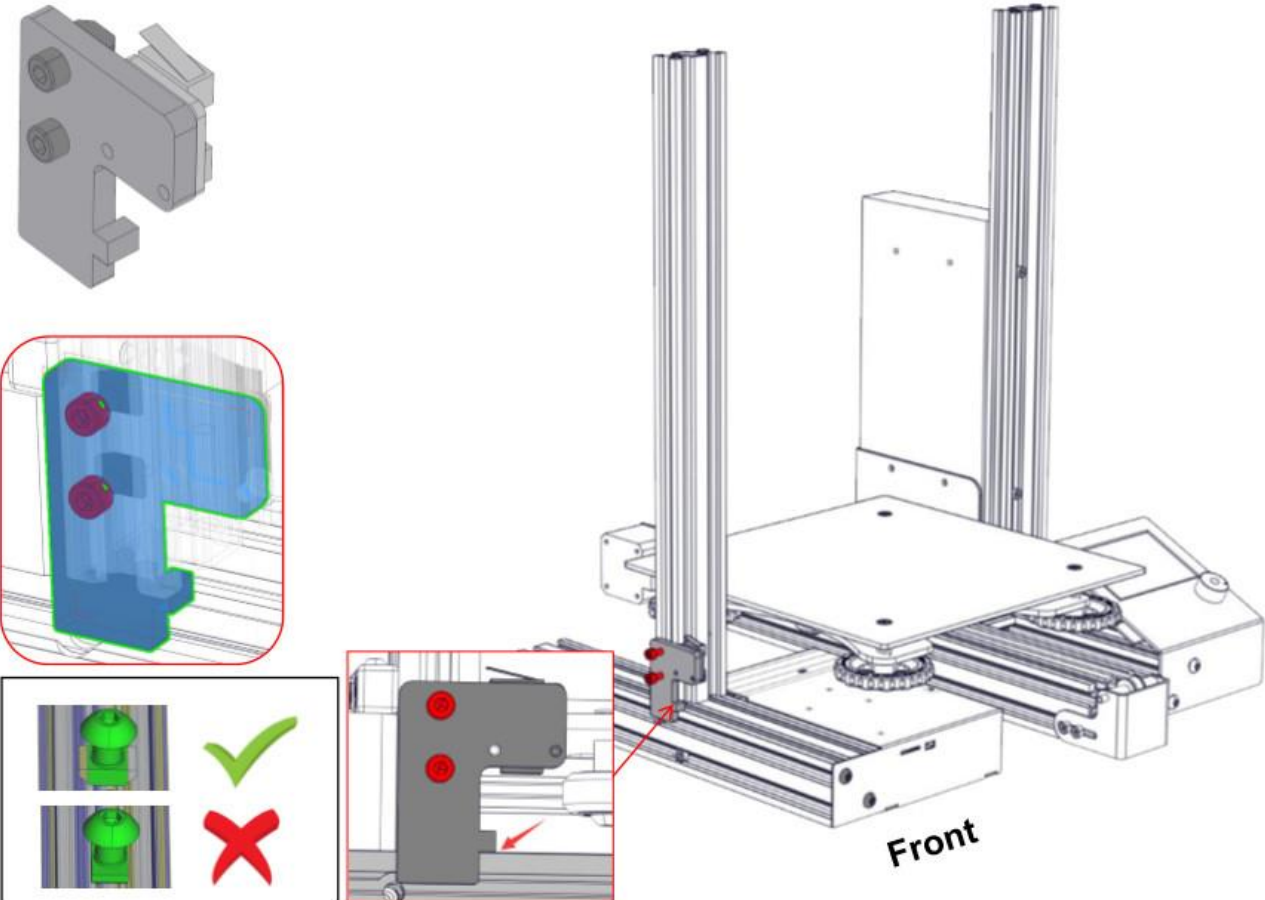


## KROK 2

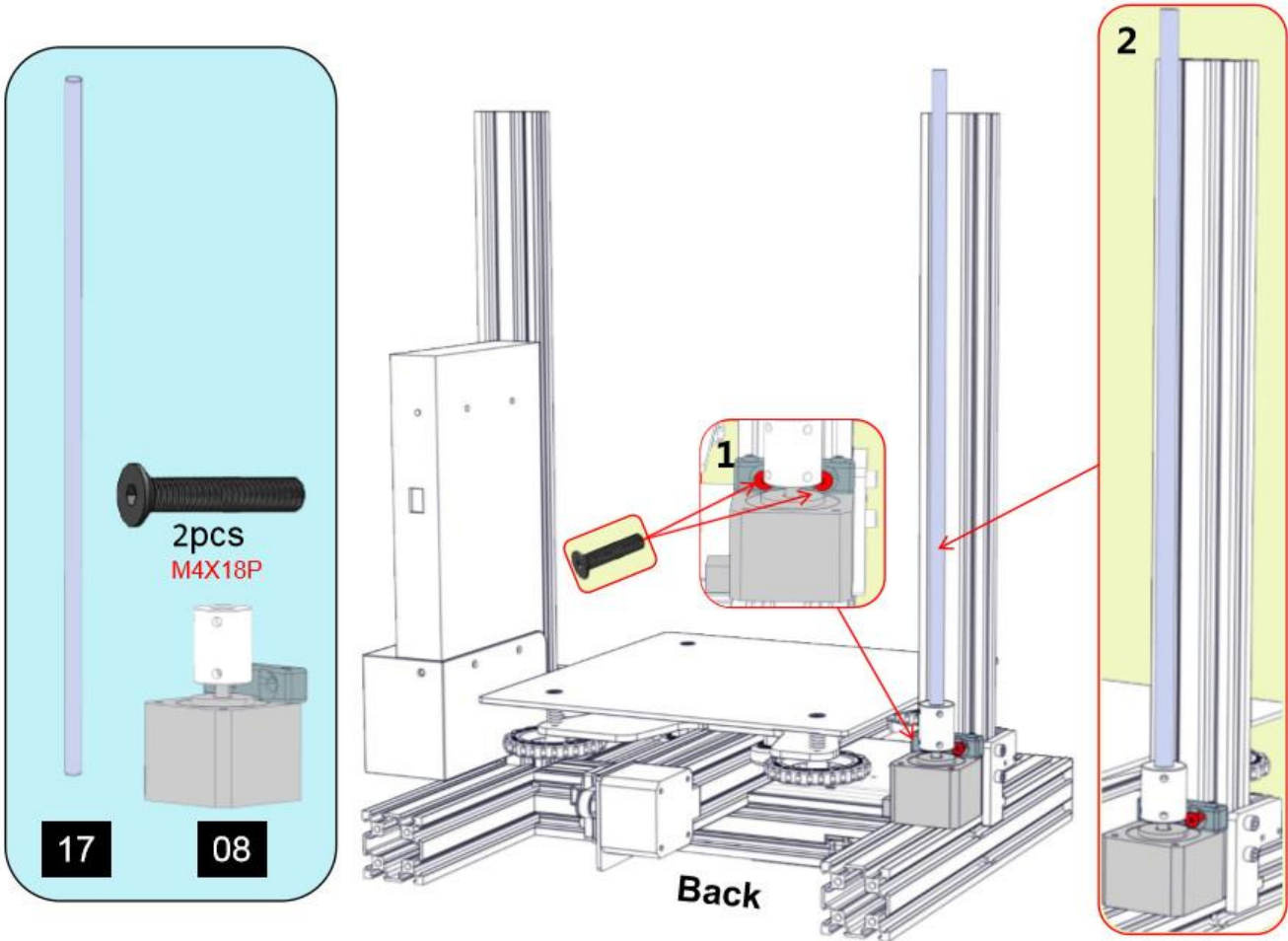


Wybierz właściwe napięcie zasilania

**KROK 3**

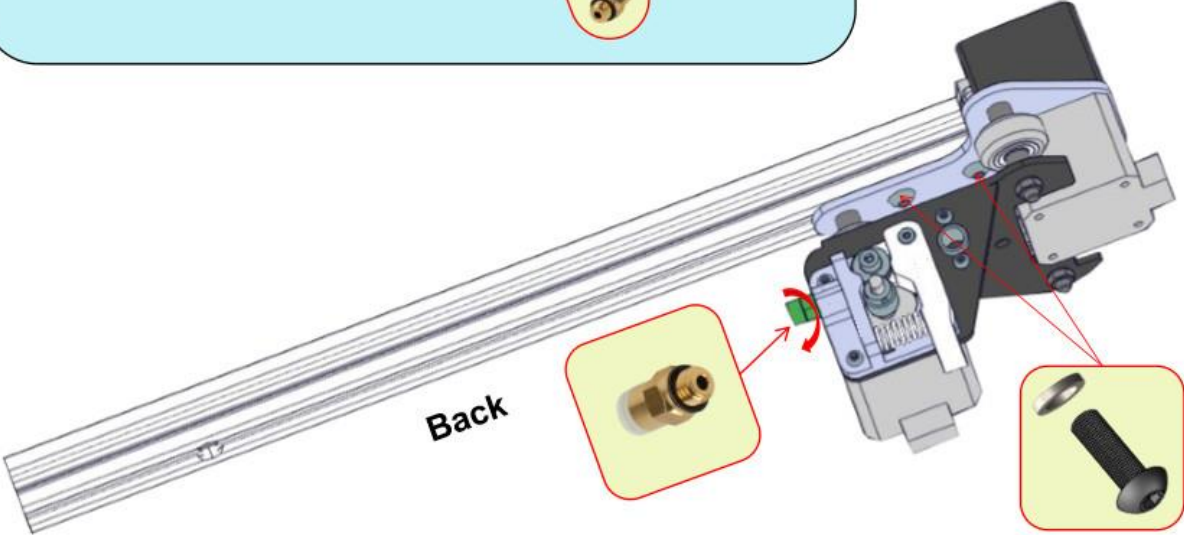
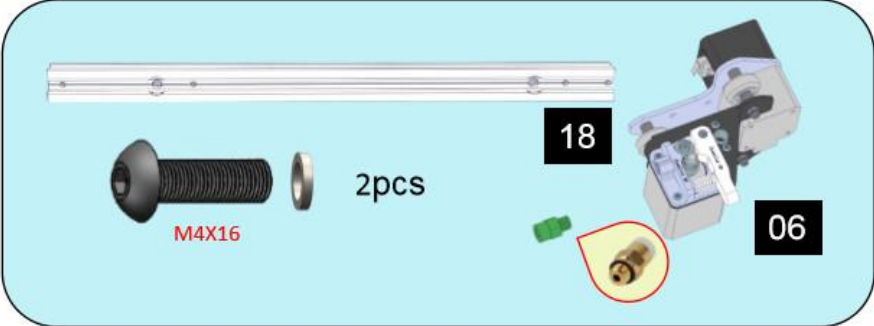


KROK 4

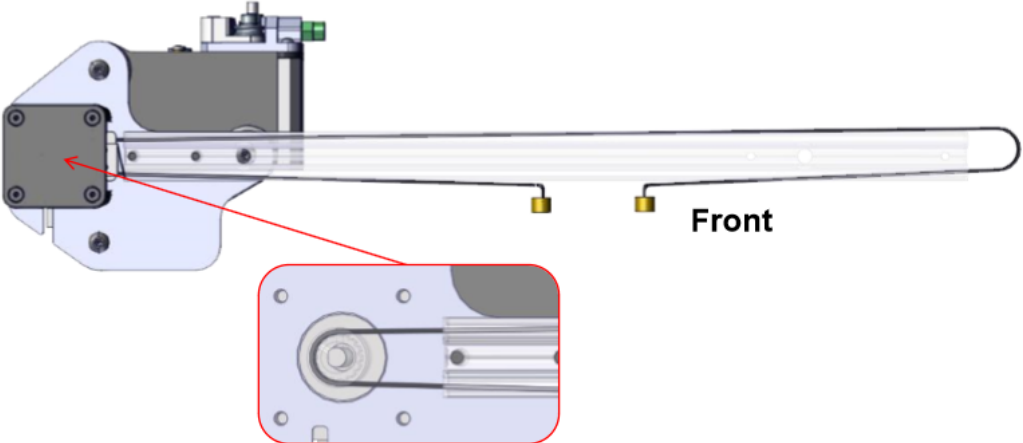
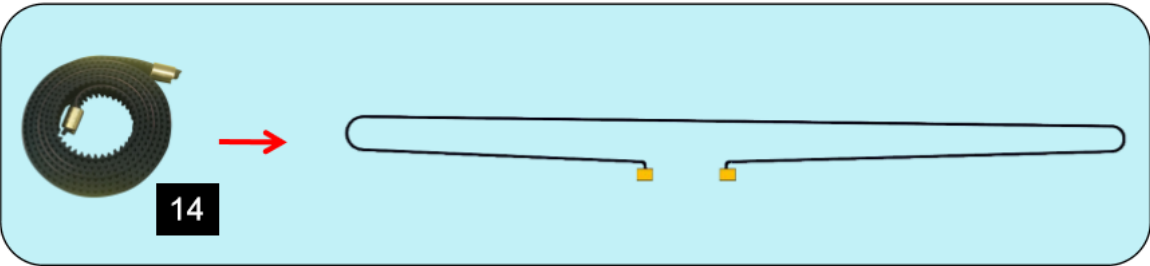




**KROK 5**

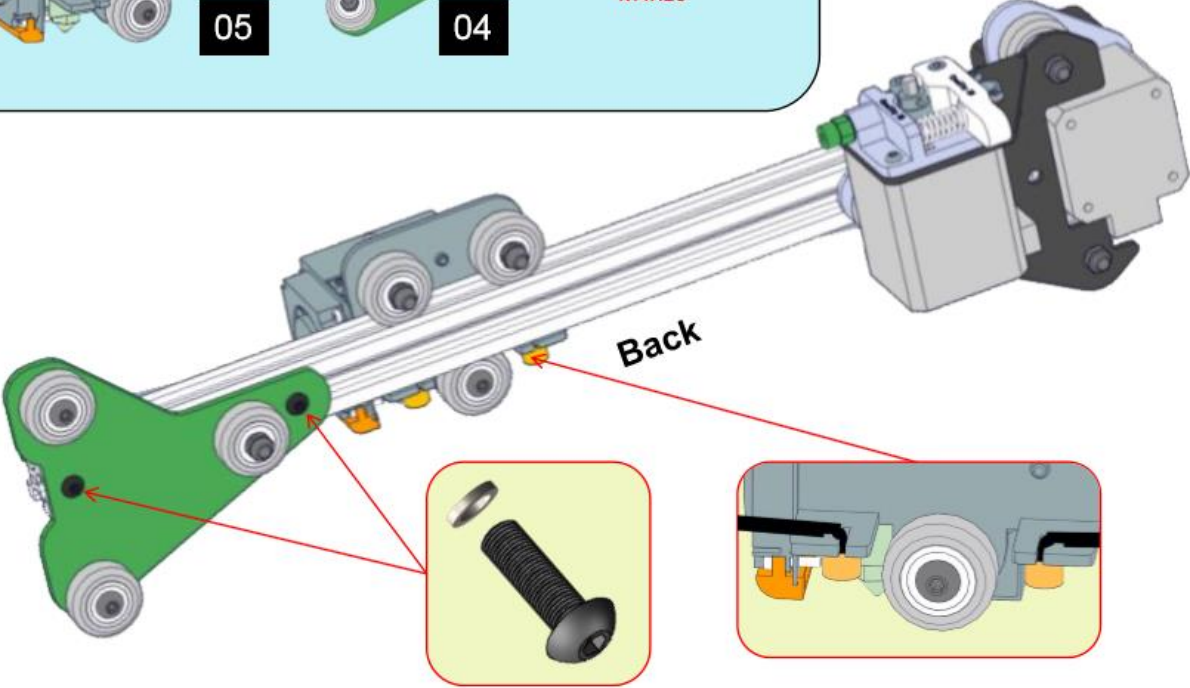
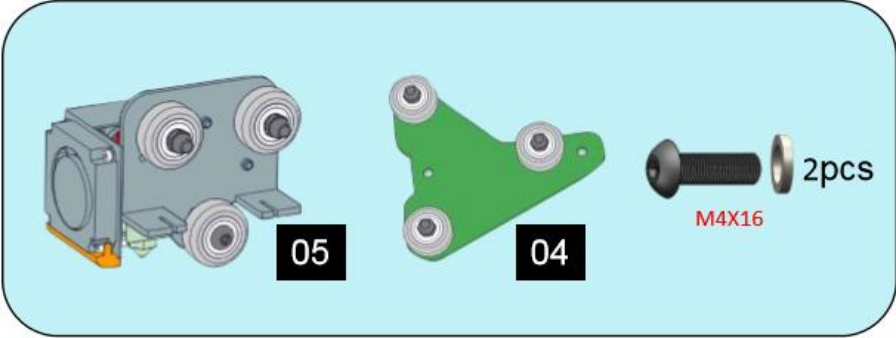


KROK 6

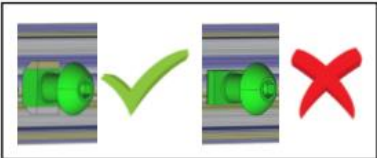
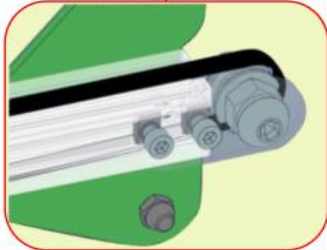
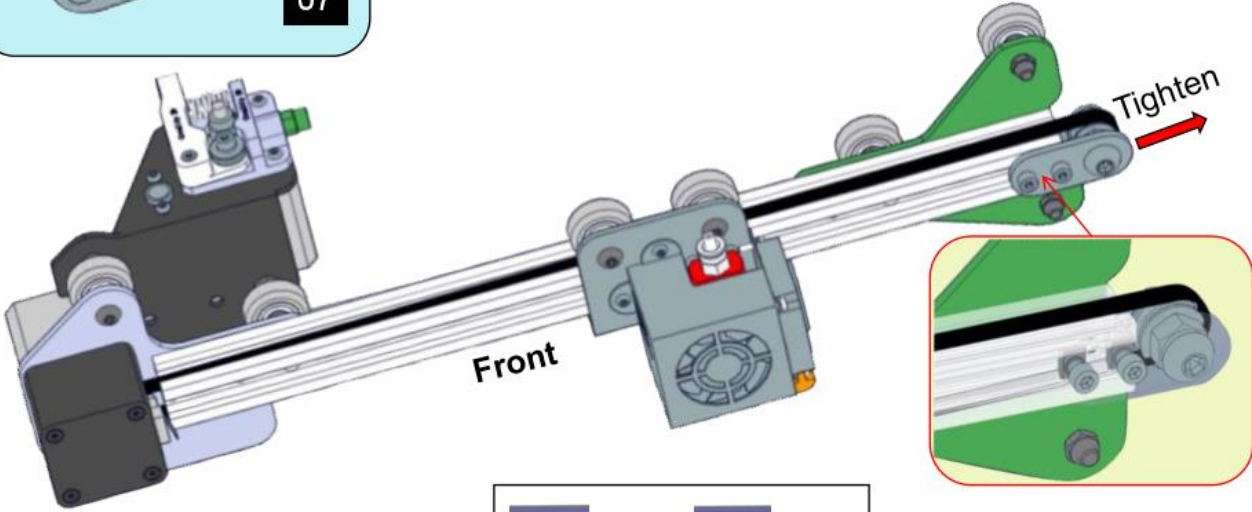
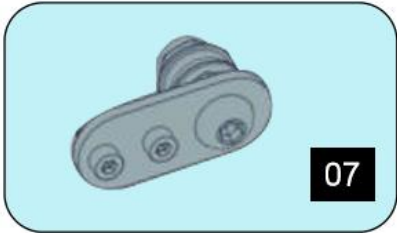




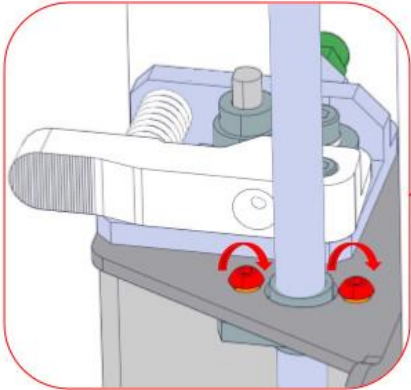
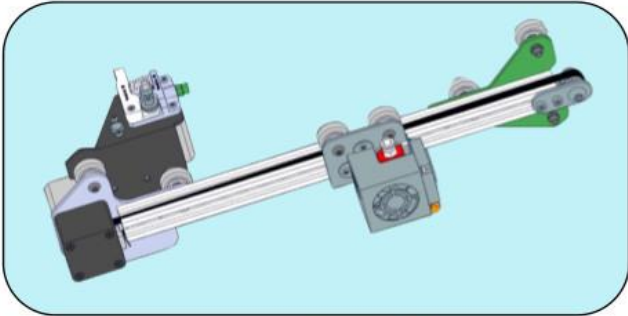
KROK 7



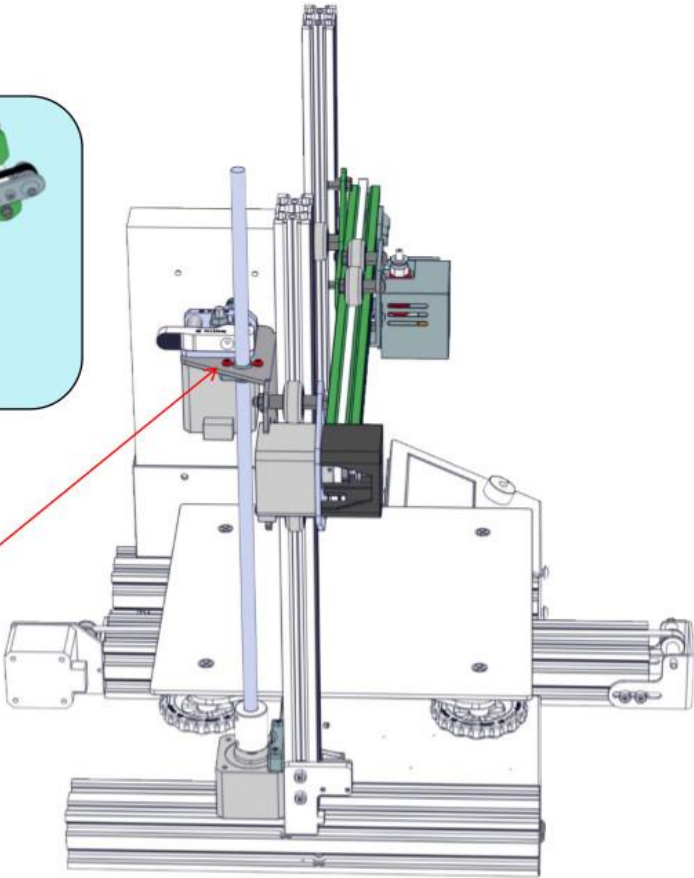
KROK 8



**KROK 9**



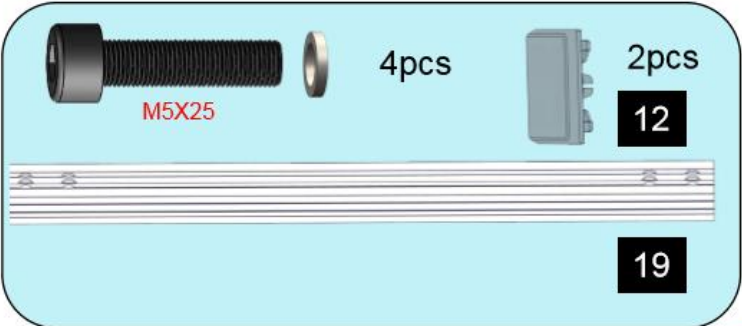
\*Don't tighten it too tight



**Left**

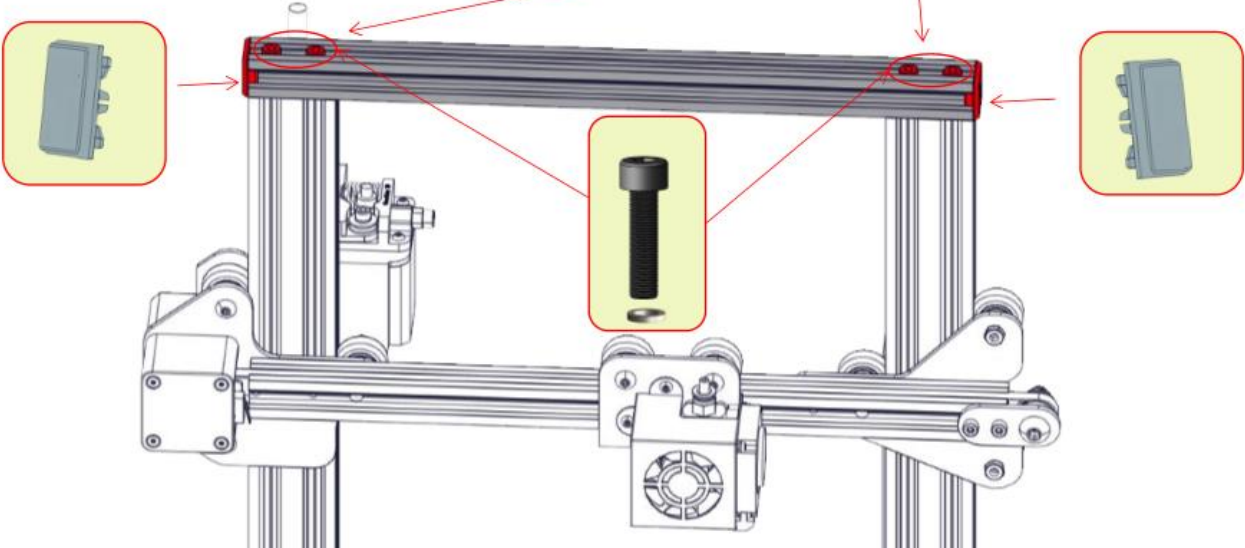
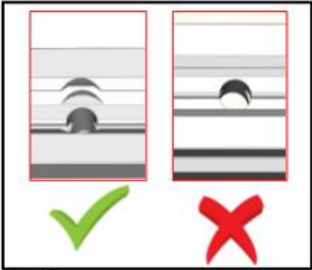
Nie dokręcaj za mocno

KROK 10

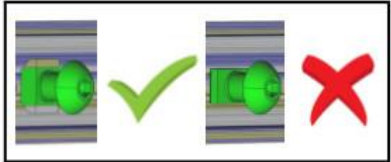
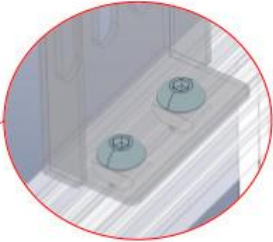
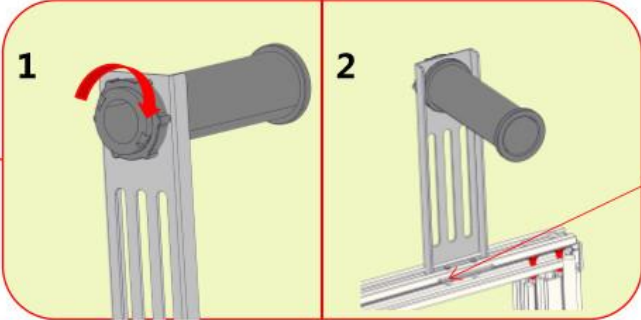
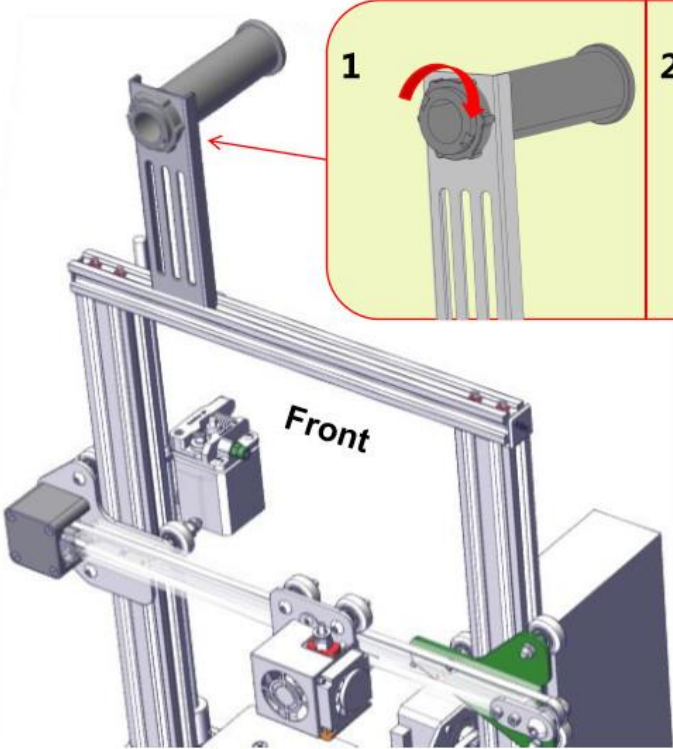
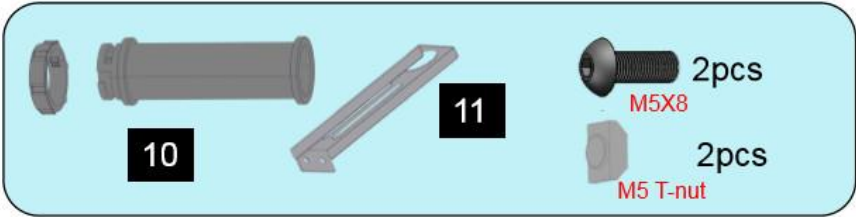


M5X25 4pcs 2pcs 12 19

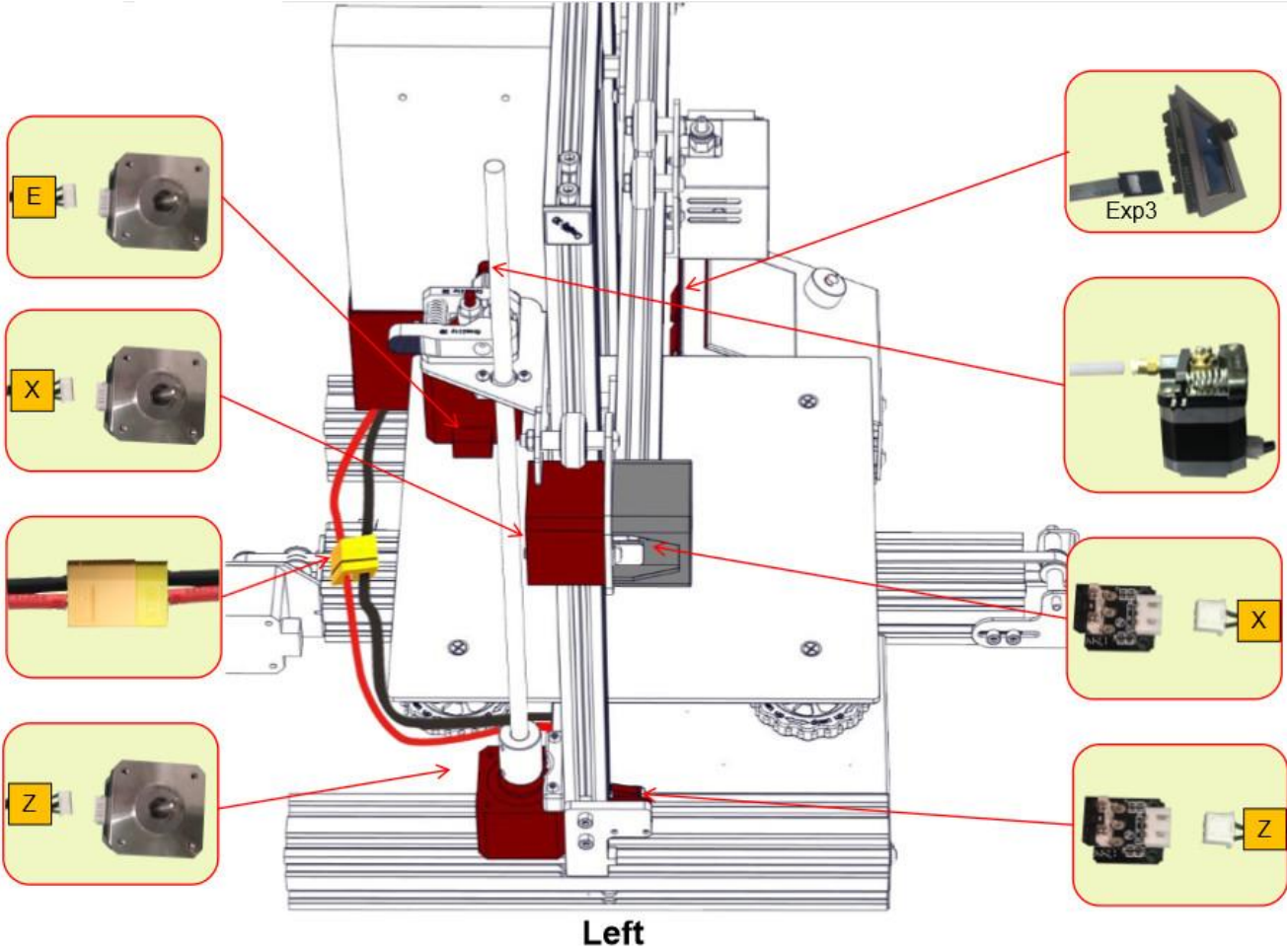
This block lists the required parts for step 10. It includes 4 pieces of M5X25 screws, 2 pieces of a grey rectangular component labeled '12', and a long grey extrusion profile labeled '19'.



KROK 11



KROK 12



**SHENZHEN CREALITY 3D TECHNOLOGY CO., LTD.**

12/F, Block 3, JinChengYuan, Huafan Road, Tongsheng Community,  
Dalang, Longhua District, Shenzhen, China, 518109  
Official Website: [www.creality3d.cn](http://www.creality3d.cn)  
Tel: +86 755-2105 9455  
E-mail: [info@creality3d.cn](mailto:info@creality3d.cn) [cs@creality3d.cn](mailto:cs@creality3d.cn)

