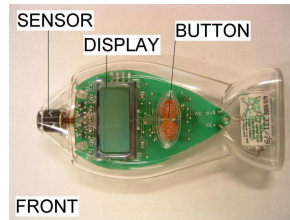


Melexis Infrared Thermometer Instructions

BASIC MEASUREMENT MODE

The Melexis thermometer is a non-contact infrared thermometer. Simply press the button and aim the thermometer at the target. Press the button again to keep the measured temperature on the display.

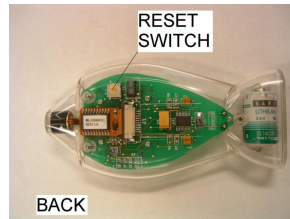


RESET SWITCH

The reset switch is situated at the back of the thermometer. Use some kind of pin (e.g. an unfolded paperclip) to press it.

°C OR °F

At first time use or after pressing the reset switch, the °C and °F symbols will flash. Press the button to confirm your choice.



MINIMUM AND MAXIMUM MODE

This mode allows you to measure the minimum, maximum and ambient temperature during a given measurement period.

To make use of the min/max mode:

- Press the reset switch.
- Press the button longer than 2 seconds. The 'MIN' and 'MAX' signs will flash.
- Aim at the target.
- Press the button and hold the button while scanning the target. The thermometer is now measuring the IR temperature while memorizing the minimum and maximum values.
- Release the button to have the minimum, maximum and ambient temperatures displayed.

To return to the basic measurement mode:

- Press the reset switch.
- Press the button shortly.

- Make your choice between °C or °F.

AUTOMATIC SHUT DOWN

When the button is not pressed for 60 seconds, the thermometer will switch off automatically.

LCD MESSAGES

ERR	'ERR' is displayed when the ambient temperature is out of boundary.
IR	'IR' is displayed when measuring infrared temperature.
AMB	'AMB' is displayed when ambient temperature is displayed.
BAT	'BAT' is displayed when the battery voltage is low.
MIN	When in MIN/MAX mode, 'MIN' shows the lowest IR temperature measured.
MAX	When in MIN/MAX mode, 'MAX' shows the highest IR temperature measured.
°C/°F	'°C' or '°F' shows the selected temperature mode.

Error messages disappear when the normal conditions are met again.



Melexis Infrared Thermometer Instructions

STORAGE & MAINTENANCE

The sensor window is the most delicate part of the thermometer. The window should be kept clean at all times. Use only a soft cloth or cotton swab with a little water or medical alcohol, allowing the window to fully dry before using the thermometer. The thermometer should be stored at room temperature between +20°C to +60°C. Never place the thermometer in water.

SPECIFICATIONS

Range	-40°C to +150°C
Resolution	0.1°C or °F
Response Time	0.5 second
Infrared Accuracy	Avg 1.5°C over whole range
Field of View	Distance Spot Ratio: 1.25 (8cm spot at 10cm distance) angle: 45°
Emissivity	0.95
Battery Life	50 hours continuous use
Dimensions	104 x 52 x 18mm
Weight	50 grams including battery

EMISSIVITY

Pre-calibrated emissivity is 0.95.

Melexis	For more information:
	www.melexis.com/thermometer
	sales_usa@melexis.com
	sales_europe@melexis.com